

ZURICHCONVENTIONCENTER.COM



# ZURICH CONVENTION CENTER

# A VIEW TO UNIQUE MEMORIES





# ENDLESS POSSIBILITIES

GRAND OPENING  
SUMMER 2021

- SPECTACULAR PANORAMIC LOCATION ON LAKE ZURICH
- WONDERFUL COMBINATION OF MODERN AND TRADITIONAL
- RIGHT IN THE HEART OF ZURICH
- CLOSE TO ZURICH AIRPORT
- OVER 15'000 HOTEL AND GUEST ROOMS
- IDEAL PUBLIC TRANSPORT CONNECTIONS
- GATEWAY TO THE SWISS ALPS

## UNIQUE LOCATION

Together, the new Zurich Convention Center and the historic Tonhalle complex create a **unique European venue** with endless possibilities for whatever event you are planning.

International specialist conventions with several thousand participants? Meetings in rooms with natural light and marvelous views? Corporate conferences with star guests on the big stage? Captivating product presentations on the breathtaking terrace with a panoramic restaurant? In the new Zurich Convention Center, truly anything is possible – and **carbon neutral** to boot.

After a four-year overhaul with an investment of around CHF 175 million, the new, highly modern Zurich Convention Center and world-renowned Zurich Tonhalle are set to open in **summer 2021**.

## MAP







# HIGHLY MODERN & FLEXIBLE

## AS DIVERSE AS THE EVENTS

**5'300m<sup>2</sup> of event space, 4'500 seats and more than 20**

**rooms and foyers:** The new Zurich Convention Center is the largest venue of its kind in the centre of Zurich right by Lake Zurich. It sets new standards in terms of location, flexibility and individuality.

On request, almost all spaces and rooms can be made smaller or bigger, be partitioned or extended. All rooms are equipped with state-of-the-art technology. By subdividing the building and creating different event spaces, several events and breakout sessions can be held simultaneously.

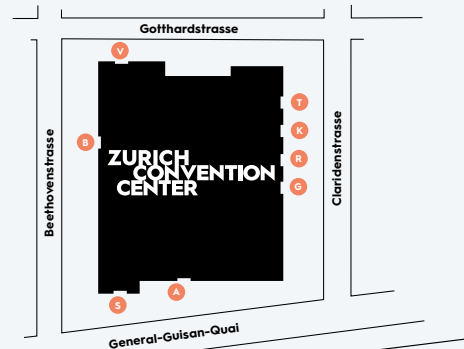
The structural and operational symbiosis with the Tonhalle opens up additional attractive possibilities. The Tonhalle is one of the largest classic concert halls for classical music in Zurich. Sit back and enjoy impressive acoustics from any seat. It is not for nothing that the Grosse Tonhalle is considered to be one of the best concert halls in the world.

Together, the new Zurich Convention Center, the historic Tonhalle complex, the new restaurant with its large terrace and the inviting bars with lounge areas will act as an **international magnet** for event guests, concert-goers, tourists and local residents.

## CARBON NEUTRAL

Zurich Convention Center Ltd. is leading the way in sustainable development and has gone completely carbon neutral. All events held at the new Zurich Convention Center will be carbon neutral at no additional cost to you.

- SWITZERLAND'S NEWEST CONVENTION CENTRE
- OVER 80 YEARS OF EXPERTISE
- HISTORIC TONHALLE COMPLEX
- 5'300 M<sup>2</sup> OF MULTI-FUNCTIONAL EVENT SPACE
- 4'500 SEATS AND MORE THAN 20 ROOMS
- GREEN MEETINGS (CARBON NEUTRAL)



- |                                     |                                     |
|-------------------------------------|-------------------------------------|
| T Entrance Tonhalle                 | A Entrance Gartensaalpassage        |
| K Entrance Zurich Convention Center | S Entrance Seezimmer                |
| R Entrance Restaurant               | B Entrance Zurich Convention Center |
| G Entrance Gartensaal               | V Entrance Vortrags- und Vereinsäle |

## ROOMS & CAPACITIES

### Seating / Number of people



Function rooms	Area (m²)	Height (m)	Max. gross exhibition area (m²)	Max. pers. in exhibition	Flooring	Theatre	Seminar	U-shape	Block	Banquet oval (10 per table)	Banquet rectangular (8 per table)	Cocktail (4 per table)	Aperó
Kongresssaal	865	~11.6			parquet	1'125	593	108		600	758	592	1'076
Kongresssaal Gallery	360				parquet	540							
Kongresssaal with Gallery					parquet	1'665							
Kongresssaal with Foyer	1'402		1'071	1'627	parquet	1'476	899			990	1'184	1'032	1'627
Kongresssaal with Gallery and Foyer					parquet	2'000							
Kongressfoyer	550	~8.00			parquet					300		352	680
Kongressfoyer Gallery	354	3.95			parquet	145							
Kongressvestibül	953	4.15	583	1'525	terrazzo	704				530	704	512	1'237
Gartensaal 1 A-C	519	4.25			terrazzo	765	378			410	528	348	648
Gartensaal 1 A-B	370				terrazzo	518	249	84		280	323	280	450
Gartensaal 1 B-C	342				terrazzo	300	234	76		230	283	204	300
Gartensaal 1 A	174				terrazzo	182	94	48	52	140	160	112	219
Gartensaal 1 B	196				terrazzo	232	96	48	52	140	200	112	257
Gartensaal 1 C	146				terrazzo	169	76	48	44	110	120	112	192
Gartensaal 2	338				terrazzo	473	258	86		240	320	228	430
Gartensaalfoyer	494	~5.00			terrazzo	552	224	116		390		268	520
Gartensaal 1 with Foyer	1'013				terrazzo					780		680	1'415
Gartensaal 2 with Foyer	832				terrazzo					670		436	916
Gartensaal 1+2 with Foyer	1'351		987	1'916	terrazzo					990	1'248	768	1'738
Seezimmer 1 A-C	174				terrazzo	224	70			120	97	112	219
Seezimmer 1A	58				terrazzo	50	31	21	28	30	48	50	50
Seezimmer 1B	55				terrazzo	50	31	21	28	30	48	50	50
Seezimmer 1C	56				terrazzo	55	31	20	28	30	48	55	55
Seezimmer 2	115				parquet	50	43	28	36	50		50	50
Seezimmer 3	85				parquet	50	49	29	36	40	50	50	50
Seezimmer 4	60				parquet	60	28	21	27		34	44	78
Seezimmer 3+4	145				parquet	172	85			100	99	84	187
Seezimmer 5	15				parquet					10	8		
Seezimmer 6	63				parquet	69	26		32	40	32	60	80
Seezimmer 7	85				parquet	50	40	32	36	50	48	50	50
Seezimmer 8	42				parquet	46	13		16	10	16	25	50
Vortragssaal 1	132				parquet	100	74	39	32	100	100	80	100
Vortragssaal 2	167				parquet	200	110	79		120	176	100	200
Vortragssaalfoyer	132				parquet								100
Vereinssaal	235				parquet	200	123	52		150			200
Grosse Tonhalle parquet	457				parquet	816				360	448		
Grosse Tonhalle Gallery/Balcony					parquet	614							
Grosse Tonhalle parquet with Gallery/Balcony					parquet	1'430							
Kleine Tonhalle parquet	275				parquet	450	192	64		200	220	200	300
Kleine Tonhalle Gallery/Balcony					parquet	181							
Kleine Tonhalle parquet with Gallery/Balcony					parquet	631							
Konzertfoyer	742		485	980	parquet	660				468	528	340	660
Konzertfoyer Gallery	190				parquet								
Lounge	62				parquet	50			20			50	50
Tonhalle Vestibül	647		436	665	terrazzo					330	448	320	655
Restaurant					terrazzo					170			
Restauranterrasse					natural stone					140			

## LEVEL 00

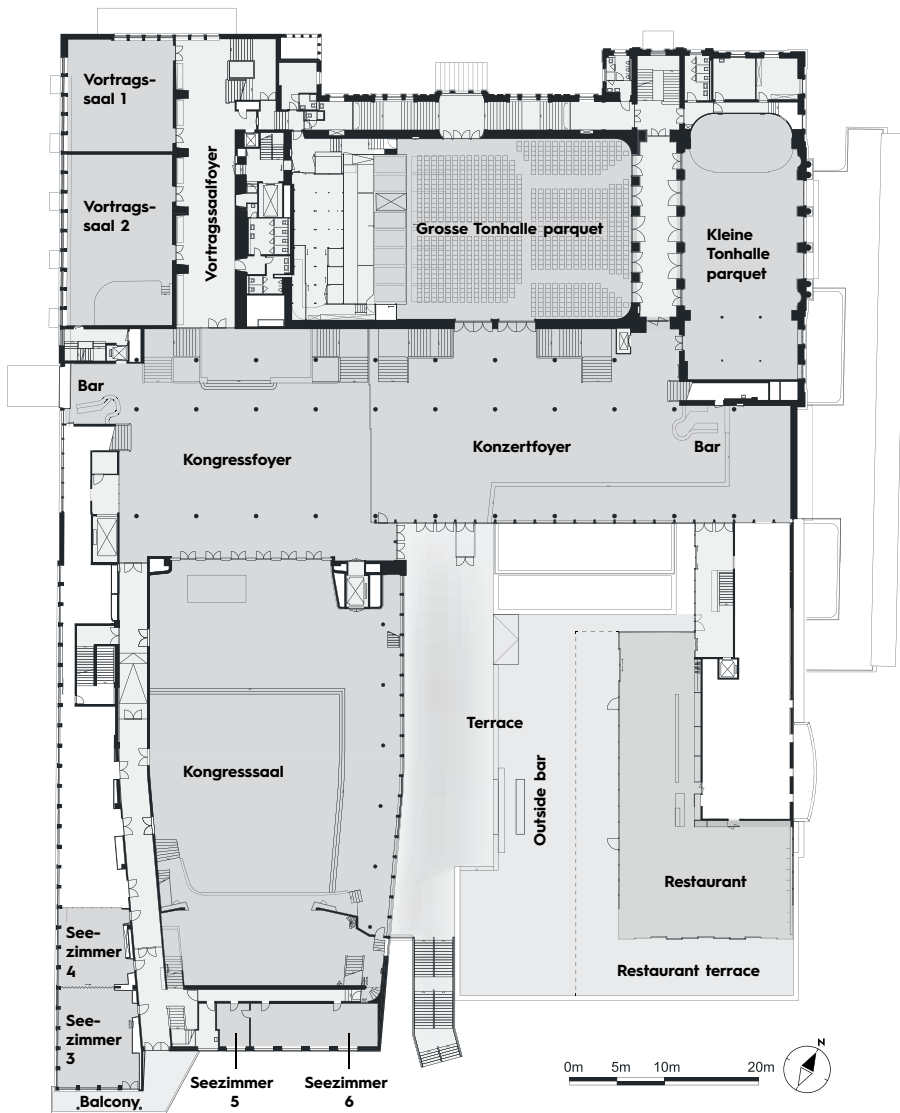


### Seating / Number of people



Function rooms	Area (m <sup>2</sup> )	Height (m)	Max. gross exhibition area (m <sup>2</sup> )	Max. perm. pers. in exhibition	Flooring	Theatre	Seminar	U-shape	Block	Banquet oval (10 per table)	Banquet rectangular (8 per table)	Cocktail (4 per table)	Apero
Kongressvestibül	953	4.15	583	1'525	terrazzo	704				530	704	512	1'237
Gartensaal 1 A-C	519	4.25			terrazzo	765	378			410	528	348	648
Gartensaal 2	338				terrazzo	473	258	86		240	320	228	430
Gartensaalfoyer	494	~5.00			terrazzo	552	224	116		390		268	520
Seezimmer 1 A-C	174				terrazzo	224	70			120	97	112	219
Seezimmer 2	115				parquet	50	43	28	36	50		50	50
Tonhalle Vestibül	647		436	665	terrazzo					330	448	320	655

## LEVEL 01



~~~~~ Lake Zurich ~~~~~

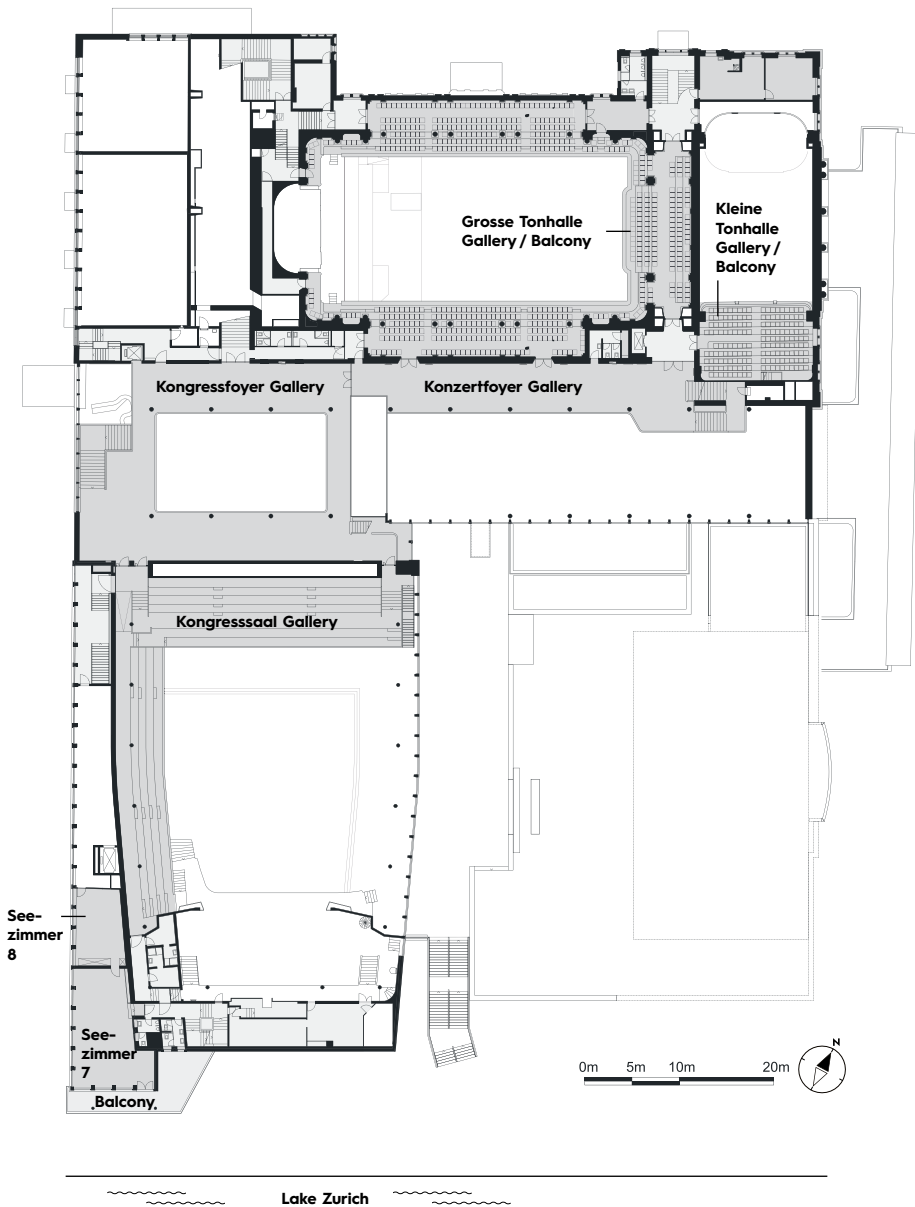
### Seating / Number of people



| Function rooms          | Area (m <sup>2</sup> ) | Height (m) | Max. gross exhibition area (m <sup>2</sup> ) | Max. perm. pers. in exhibition | Flooring      | Theatre | Seminar | U-shape | Block | Banquet oval (10 per table) | Banquet rectangular (8 per table) | Cocktail (4 per table) | Apero |
|-------------------------|------------------------|------------|----------------------------------------------|--------------------------------|---------------|---------|---------|---------|-------|-----------------------------|-----------------------------------|------------------------|-------|
| Kongresssaal            | 865                    | ~11.6      |                                              |                                | parquet       | 1125    | 593     | 108     |       | 600                         | 758                               | 592                    | 1076  |
| Kongressfoyer           | 550                    | ~8.00      |                                              |                                | parquet       |         |         |         |       | 300                         |                                   | 352                    | 680   |
| Seezimmer 3             | 85                     |            |                                              |                                | parquet       | 50      | 49      | 29      | 36    | 40                          | 50                                | 50                     | 50    |
| Seezimmer 4             | 60                     |            |                                              |                                | parquet       | 60      | 28      | 21      | 27    |                             | 34                                | 44                     | 78    |
| Seezimmer 5             | 15                     |            |                                              |                                | parquet       |         |         |         |       | 10                          | 8                                 |                        |       |
| Seezimmer 6             | 63                     |            |                                              |                                | parquet       | 69      | 26      |         | 32    | 40                          | 32                                | 60                     | 80    |
| Vortragssaal 1          | 132                    |            |                                              |                                | parquet       | 100     | 74      | 39      | 32    | 100                         | 100                               | 80                     | 100   |
| Vortragssaal 2          | 167                    |            |                                              |                                | parquet       | 200     | 110     | 79      |       | 120                         | 176                               | 100                    | 200   |
| Vortragssaalfoyer       | 132                    |            |                                              |                                | parquet       |         |         |         |       |                             |                                   |                        | 100   |
| Grosse Tonhalle parquet | 457                    |            |                                              |                                | parquet       | 816     |         |         |       | 360                         | 448                               |                        |       |
| Kleine Tonhalle parquet | 275                    |            |                                              |                                | parquet       | 450     | 192     | 64      |       | 200                         | 220                               | 200                    | 300   |
| Konzertfoyer            | 742                    |            | 485                                          | 980                            | parquet       | 660     |         |         |       | 468                         | 528                               | 340                    | 660   |
| Restaurant              |                        |            |                                              |                                | terrazzo      |         |         |         |       | 170                         |                                   |                        |       |
| Restaurant terrace      |                        |            |                                              |                                | natural stone |         |         |         |       | 140                         |                                   |                        |       |

All rooms have daylight ~ = different room heights

## LEVEL 02



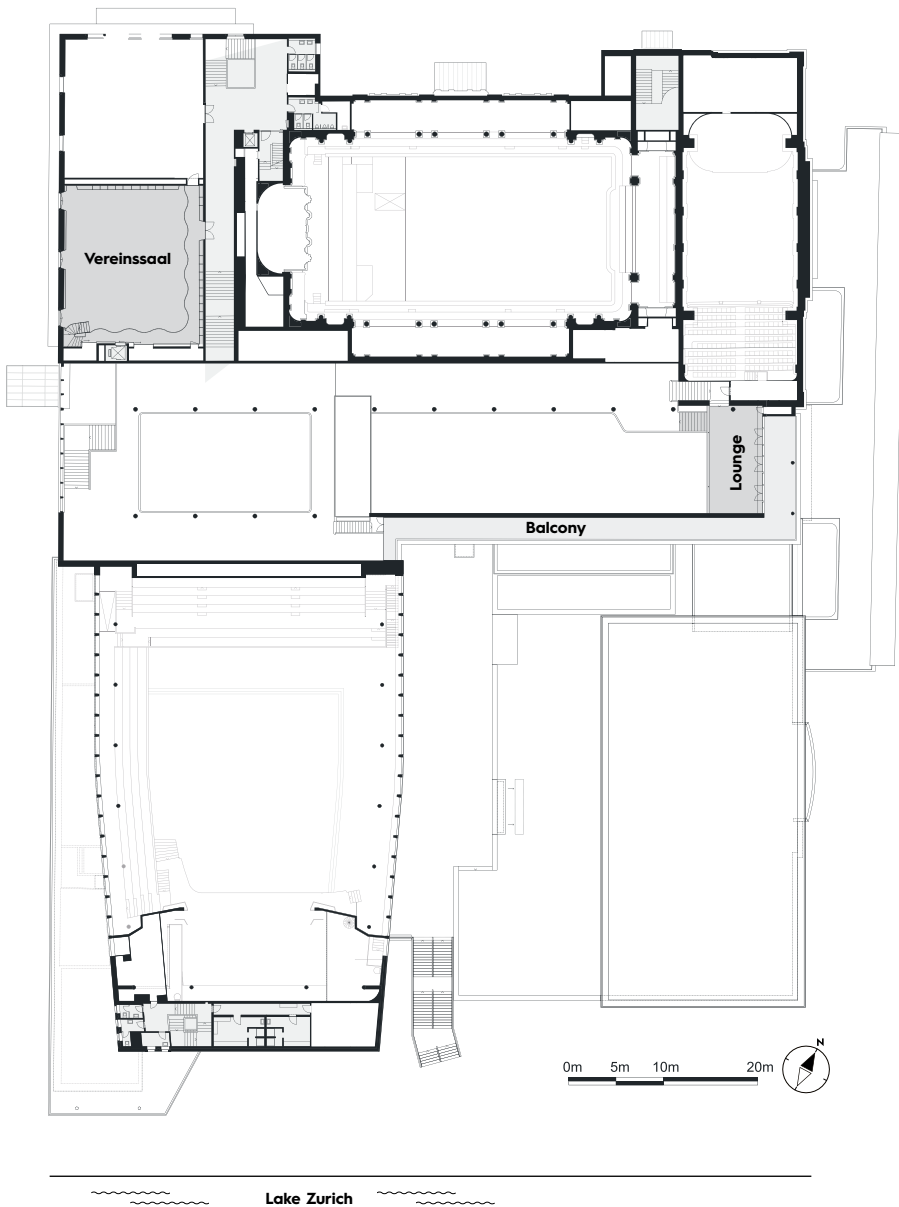
### Seating / Number of people



| Function rooms                    | Area (m <sup>2</sup> ) | Height (m) | Max. gross exhibition area (m <sup>2</sup> ) | Max. perm. pers. in exhibition | Flooring | Theatre | Seminar | U-shape | Block | Banquet oval (10 per table) | Banquet rectangular (8 per table) | Cocktail (4 per table) | Apero |
|-----------------------------------|------------------------|------------|----------------------------------------------|--------------------------------|----------|---------|---------|---------|-------|-----------------------------|-----------------------------------|------------------------|-------|
| Kongresssaal Gallery              | 360                    |            |                                              |                                | parquet  | 540     |         |         |       |                             |                                   |                        |       |
| Kongressfoyer Gallery             | 354                    | 3.95       |                                              |                                | parquet  | 145     |         |         |       |                             |                                   |                        |       |
| Seezimmer 7                       | 85                     |            |                                              |                                | parquet  | 50      | 40      | 32      | 36    | 50                          | 48                                | 50                     | 50    |
| Seezimmer 8                       | 42                     |            |                                              |                                | parquet  | 46      | 13      |         | 16    | 10                          | 16                                | 25                     | 50    |
| Grosse Tonhalle Gallery / Balcony |                        |            |                                              |                                | parquet  | 614     |         |         |       |                             |                                   |                        |       |
| Kleine Tonhalle Gallery / Balcony |                        |            |                                              |                                | parquet  | 181     |         |         |       |                             |                                   |                        |       |
| Konzertfoyer Gallery              | 190                    |            |                                              |                                | parquet  |         |         |         |       |                             |                                   |                        |       |



## LEVEL 03



### Seating / Number of people



| Function rooms | Area (m <sup>2</sup> ) | Height (m) | Max. gross exhibition area (m <sup>2</sup> ) | Max. perm. pers. in exhibition | Flooring | Theatre | Seminar | U-shape | Block | Banquet oval (10 per table) | Banquet rectangular (8 per table) | Cocktail (4 per table) | Apero |
|----------------|------------------------|------------|----------------------------------------------|--------------------------------|----------|---------|---------|---------|-------|-----------------------------|-----------------------------------|------------------------|-------|
| Vereinsaal     | 235                    |            |                                              |                                | parquet  | 200     | 123     | 52      |       | 150                         |                                   |                        | 200   |
| Lounge         | 62                     |            |                                              |                                | parquet  | 50      |         |         | 20    |                             |                                   | 50                     | 50    |



# INDIVIDUAL SOLUTIONS



## CONFERENCE AND EVENT SERVICES

Reliable and with an eye for detail. This is how we organise events. And it seems we're doing quite well: the loyalty of our national and international customers is the best proof.

We organise all kinds of events with 10 to 4'500 participants. This means we have advised, supported and looked after several hundred thousand people – a number that makes us proud, as does the fact that we are one of the leading and newest convention centres in Switzerland.

Whether large or small events, national or international, whether individual services are required or an all-round carefree package, whether we are a service provider or partner: we are happy to take on the role required in the areas of participant management, accommodation management, exhibitor management, organised transfers, temporary staff and corporate programmes.

## TAILOR-MADE GASTRONOMY CONCEPT

Organisers can make use of our first-class in-house gastronomy service, with over 80 years of experience. On request, our chef will design a customised gastronomy concept for you, ensuring that your event is a feast for the senses. Whether it's a reception, conference, congress, gala evening, press conference or general meeting – you've come to the right place! Whether 10 or 4'500 people, be inspired by our diversity and our quality awareness. Only first-class cuisine leads to a first-class event.



## ARE YOU PLANNING AN EVENT?

Our experienced team of advisers would be happy to support and advise you in planning and running your event. We would love to hear from you:

[CONSULTING@ZURICHCONVENTIONCENTER.COM](mailto:CONSULTING@ZURICHCONVENTIONCENTER.COM)

T. +41 44 206 36 20

# STATE-OF-THE-ART TECHNOLOGY

## EVENT TECHNOLOGY

Our technical project managers are your event technology experts for the realisation of your visions. Organisers receive professional support and advice from the first inspection, through the design and planning, to the realisation. Our building offers permanently installed, state-of-the-art audio, video, lighting, stage and rigging technology, which is equally suitable for conferences, cultural events and concerts. Accurate CAD planning, photorealistic visualisation, a director or graphic designer for your production? We are happy to help you!

## VENON Projects AG – our integrated partner

As a high-end service provider for event technology, VENON offers a full service: expert advice, creative design and technical concepts, detailed planning and implementation in the areas of audio, lighting, video and conference technology, ICT, rigging and stage construction. Whether product presentation, congress, conference, press conference, gala, general meeting, concert or show – the Zurich Convention Center in conjunction with its fully integrated partner VENON delivers quality that sets new standards. The many years of experience and references speak for themselves:

- Roche Holding Ltd AGM 2019 (900 attendees)
- Zurich Insurance Company Ltd AGM (2'000 attendees)
- Siemens evening event at Swissbau 2020 (200 attendees)
- Swiss Music Awards 2020 (950 attendees)
- Moon & Stars 2019 (80'000 attendees)
- Energy Star Night 2019 (13'000 attendees)
- Energy Air 2019 (30'000 attendees)
- Huawei Lounge at the World Economic Forum 2019
- PostFinance Summer Party 2018 (800 attendees), etc.
- Zurich Open Air 2019 (82'000 attendees)
- HPE Discover 2018 (6'500 attendees)

## EXPERTISE

- CONFERENCE TECHNOLOGY
- PROJECTION AND VIDEO TECHNOLOGY
- CAMERA AND TRANSMISSION TECHNOLOGY
- LED SCREENS
- ICT SOLUTIONS
- SOUND REINFORCEMENT AND SIMULTANEOUS
- LIGHTING AND RIGGING TECHNOLOGY
- STAGE DESIGN AND STAGE CONSTRUCTION
- EVENT ARCHITECTURE

## SERVICES OFFERED

- DESIGN AND CONCEPTION
- EVENT ENGINEERING
- TECHNICAL PROJECT MANAGEMENT
- VISUALISATIONS AND CAD PLANNING





## INTERNATIONAL STAGE

The Zurich Convention Center has hosted numerous global stars through the years, from jazz legends Louis Armstrong, Duke Ellington, Benny Goodman and Ella Fitzgerald to entertainers Josephine Baker, Sammy Davis Jr. and Harry Belafonte and rock and pop stars Ray Charles, Tina Turner, Deep Purple, Udo Jürgens and Patricia Kaas. We have also had the honour of welcoming Nobel Laureates in Literature, US presidents, federal councillors, business leaders and personalities such as the Dalai Lama into the iconic building, and the award ceremony for the FIFA World Player of the Year has already been held here.

## LARGE RANGE OF HOTELS

Almost all hotels in Zurich can be reached very easily from the Zurich Convention Center, thanks to its central location and excellent public transport connections. In Zurich and the surrounding region, more than 15'000 hotel and guest rooms are available, over 1'000 of which are within walking distance.



## CONNECTED TO THE WORLD

Located in the heart of Europe, Zurich is ideally connected to the rest of the world. 60 direct flights to over 170 destinations around the globe lead to the cosmopolitan city. It takes just 20 minutes to travel from the Zurich Airport hub to the Convention Center.

Zurich Main Station is the largest railway station in Switzerland with direct connections to most major Swiss cities and to neighbouring countries. And if you arrive by train, you have a number of stations from which to choose the most suitable in the heart of the city: shopping facilities and the most important sights are in the immediate vicinity.







## ZURICH CONVENTION CENTER IS A MEMBER OF

- EXPO EVENT Swiss LiveCom Association
- Zurich Tourism Convention Bureau
- SCIB – Switzerland Convention Incentive Bureau
- VSSA – Association of Swiss Stadia and Arena
- EVVC – European Association of Event Centers
- SCC – Swiss Convention Centers
- Hotelleriesuisse
- Gastrosuisse
- Enge local association



Download this flyer here:  
**ZURICHCONVENTIONCENTER.COM**



Since 2019 certified carbon neutral, including gastronomy

## CONTACT US

**Zurich Convention Center Ltd.  
Kongresshaus Zürich AG**  
Gotthardstrasse 5  
8002 Zurich  
Switzerland

**[CONSULTING@ZURICHCONVENTIONCENTER.COM](mailto:CONSULTING@ZURICHCONVENTIONCENTER.COM)**

**T. +41 44 206 36 20**